



**USLED**  
Always the Right Choice!

# QUICK REFERENCE PRODUCT GUIDE



# USLED™

*Always the Right Choice!*

WE DO THE  
RIGHT THINGS,  
THE RIGHT WAY,  
AND ON TIME.





INDOOR LED  
LIGHTING  
SOLUTIONS



## EXSABAY® XTREME COMPACT

### LED Linear High Bay

- Selectable CCT (4000K or 5000K)
- 120-277V or 277-480V
- >167,000 Hrs. L70 lifetime
- Suspended, surface, or pendant mounted
- Sensor, wireguard, and battery backup accessories



MODEL	CCT	OPTIC	WATTAGE	LUMENS	EFFICACY
EBXC1-90	5000K	90°	90.0W	14,850	165 LPW
EBXC1-150	5000K	90°	150.0W	24,750	165 LPW
EBXC1-188	5000K	90°	188.0W	31,020	165 LPW
EBXC1-200	5000K	90°	200.0W	33,000	165 LPW
EBXC1-220	5000K	90°	220.0W	36,300	165 LPW
EBXC1-255	5000K	90°	255.0W	42,074	165 LPW
EBXC1-300	5000K	90°	300.0W	49,500	165 LPW
EBXC1-375	5000K	90°	375.0W	61,875	165 LPW
EBXC1-440	5000K	90°	440.0W	72,600	165 LPW



## EXSABAY® INFINITY

### LED Round High Bay

- >100,000 Hrs. L70 lifetime
- 4000K or 5000K CCT
- 90-305V or 347-480V input.
- White or black finish
- 80+ CRI
- Hook mount accessory
- Clear polycarbonate reflector accessory
- Sensor and battery backup accessories

MODEL	CCT	WATTAGE	LUMENS	EFFICACY
EBI1-A	4000K	81.7W	11,685	143 LPW
EBI1-B	4000K	103.7W	14,934	144 LPW
EBI1-C	4000K	123.4W	18,325	149 LPW
EBI1-D	4000K	150.9W	22,214	147 LPW
EBI1-E	4000K	205.5W	29,970	146 LPW
EBI1-F	4000K	245.9W	35,683	145 LPW
EBI1-G	4000K	306.5W	44,923	147 LPW



## FM1

### LED Architectural Pendant

- >36,000 Hrs. L70 lifetime
- 3500K, 4000K, or 5000K CCT
- 120-277V input
- 80+ CRI
- Choice of powder coat finish
- Canopy and power cable match the shade color finish
- Frosted acrylic lens

MODEL	CCT	WATTAGE	LUMENS	EFFICACY
FM1-X-X-50-060	5000K	20.3W	2,190	108 LPW
FM1-X-X-50-080	5000K	26.8W	2,810	105 LPW
FM1-X-X-50-105	5000K	35.3W	3,550	101 LPW
FM1-X-X-50-120	5000K	41.0W	3,950	96 LPW
FM1-X-X-50-140	5000K	48.1W	4,570	95 LPW





## HLS2

### High Output LED Linear Strip

- High-output performance from a sleek linear design (IP66)
- ≥167,000 Hrs. L70 lifetime
- 3500K, 4000K, or 5000K CCT
- 120-277V only
- Surface mounted or suspended with cables
- Linkable-M20 cable gland entry

MODEL	CCT	WATTAGE	LUMENS	EFFICACY
HLS2-1-4-UNVL-80-50	5000K	78.7W	12,676	161 LPW



## L-GRID<sup>®</sup>

### ESSENTIAL SELECT

Back-Lit LED Flat Panel | Selectable Options

- Selectable wattage and CCT
- >50,000 Hrs. L70 lifetime
- 3500K, 4000K, or 5000K CCT
- 120-277V input
- 82+ CRI
- Recessed, cable or surface mount options
- Battery back-up available

MODEL	CCT	WATTAGE	LUMENS	EFFICACY
FTR5-14	5000K	19.7W	2,525	128 LPW
FTR5-14	5000K	30.0W	3,685	123 LPW
FTR5-14	5000K	38.9W	4,759	122 LPW
FTR5-22	5000K	20.2W	2,549	126 LPW
FTR5-22	5000K	29.8W	3,720	125 LPW
FTR5-22	5000K	39.4W	4,804	122 LPW
FTR5-24	5000K	28.9W	3,612	125 LPW
FTR5-24	5000K	37.9W	4,743	125 LPW
FTR5-24	5000K	48.0W	5,946	124 LPW



## L-GRID<sup>®</sup>

### PROMAX SELECT

Back-Lit LED Flat Panel | Selectable Options

- Selectable wattage and CCT
- 165,000 Hrs. L70 lifetime
- 3000K, 3500K, 4000K, 5000K or 6500K CCT
- 120-277V input
- 82+ CRI
- Recessed or surface mount
- Battery back-up available
- Larger junction box for easier wiring and installation

MODEL	CCT	WATTAGE	LUMENS	EFFICACY
FTR4-14	5000K	26.0W	3,874	149 LPW
	5000K	31.9W	4,672	146 LPW
	5000K	37.9W	5,451	144 LPW
FTR4-22	5000K	26.0W	3,874	149 LPW
	5000K	31.9W	4,672	146 LPW
	5000K	37.9W	5,451	144 LPW
FTR4-24	5000K	31.9W	4,995	157 LPW
	5000K	39.6W	6,085	154 LPW
	5000K	48.8W	7,330	150 LPW





## L-GRID® ESSENTIAL SELECT

High Output LED Flat Panel

- >181,000 Hrs. L70 lifetime
- 3500K, 4000K, or 5000K CCT
- 120-277V input
- 80+ CRI
- Recessed mount in standard T-Grid ceilings
- Plenum air return option
- Battery back-up available

MODEL	CCT	WATTAGE	LUMENS	EFFICACY
GTR2-22EH-H	5000K	195.7W	21,480	110 LPW



## L-TRIM DISK

LED Downlight Kit

- Kit fits most existing 4"-6" recessed downlight fixtures
- Suitable for wet locations
- 140,000 Hrs. L70 lifetime
- 120V input; 3000K CCT
- Triac dimming capable
- Surface mount to standard 4" J-Box or direct wire

MODEL	CCT	WATTAGE	LUMENS	EFFICACY
USCD1-12-30	3000K	12.0W	1,090	91 LPW



## L-TRIM SOL XLE SELECT

LED Downlight | Selectable Options

- Selectable wattage and CCT
- Suitable for wet locations
- ≥60,000 Hrs. L70 lifetime
- 120-277V input; 80+ CRI
- 2700K, 3000K, 3500K, 4000K or 5000K CCT
- Mounts in ceiling with spring action clips (IC rated)

MODEL	CCT	WATTAGE	LUMENS	EFFICACY
LTR4-6R-UNV-2-SCCT-WH (6" Round) 9W/13W/19W	5000K	8.7W	968	111 LPW
	5000K	13.7W	1,439	105 LPW
	5000K	18.1W	1,803	99.6 LPW





# L-TRIM SOL XLE2 SELECT

High Output LED Downlight | Selectable Options

- Selectable wattage and CCT
- Suitable for wet locations
- ≥50,000 Hrs. L70 lifetime
- 3000K, 4000K, or 5000K CCT
- 120-277V input.
- 90+ CRI
- Mounts in ceiling with spring action clips (IC rated)



MODEL	CCT	WATTAGE	LUMENS	EFFICACY
LTR5-6R (6") 20W/30W/40W	5000K	20.0W	2,200	110 LPW
	5000K	30.0W	3,200	107 LPW
	5000K	41.5W	4,500	108 LPW
LTR5-8R (8") 40W/50W/60W	5000K	40.0W	4,300	108 LPW
	5000K	50.0W	5,250	105 LPW
	5000K	60.0W	6,200	103 LPW



# LAS1

LED Linear Architectural Strip

- Selectable CCT
- >50,000 Hrs. L70 lifetime
- 3000K, 4000K, or 5000K CCT
- 120-277V input
- 82+ CRI
- 4 ft. sleek design with no visible hardware or holes.
- Cable suspended, surface mounted, wall mounted, or recessed (T-Bar).



MODEL	CCT	WATTAGE	LUMENS	EFFICACY
LAS1-4-30-UNVL	3000K	30.1W	3,894	129.4 LPW
	4000K	29.5W	3,988	135.2 LPW
	5000K	30.3W	3,958	130.6 LPW



# LLT1

LED Linear Linkable Strip | Selectable Options

- Selectable wattage and CCT
- >181,000 Hrs. L70 lifetime
- 3000K, 4000K, or 5000K CCT
- 120-277V input
- 82+ CRI
- Fixture housing locks into place with an alignment channel bracket
- Battery backup and motion sensor options available



MODEL	CCT	WATTAGE	LUMENS	EFFICACY
LLT1-2-25 15W/20W/25W	5000K	14.88W	2,284	153 LPW
		19.53W	3,034	154 LPW
		23.95W	3,626	151 LPW
LLT1-4-40 25W/30W/40W	5000K	24.55W	3,752	153 LPW
		30.30W	4,585	151 LPW
		40.36W	5,945	147 LPW
LLT1-8-60 50W/60W/80W	5000K	49.10W	7,504	153 LPW
		60.60W	9,170	151 LPW
		80.72W	11,890	147 LPW



## LMU1

### Under Shelf LED Linear Strip

- Optimized for under shelf, retail, or cabinet applications
- 36" Length
- 3000K, 4000K, or 5000K
- 120V input
- 80+ CRI
- Mounted with magnets or self-tapping screws
- Optional motion sensor with six minute display

MODEL	CCT	WATTAGE	LUMENS	EFFICACY
LMU1-1-12-36	5000K	12.0W	1,200	100 LPW



## LSF1

### LED Linear Wrap

- >161,000 Hrs. L70 lifetime
- 4000K, 5000K, or Tunable White (2700-6500K)\*
- 120-277V input
- 4 ft. or 8 ft. models
- 80+ CRI
- Suspended or surface mounted
- Wider 14" base option for larger footprints

MODEL	CCT	WATTAGE	LUMENS	EFFICACY
LSF1-X-4-UNVL-25	5000K	25.0W	3,430	137 LPW
LSF1-X-4-UNVL-30	5000K	28.8W	4,075	142 LPW
LSF1-X-8-UNVL-50	5000K	51.1W	6,850	134 LPW



\*Tunable white requires Smart Blu Bluetooth lighting controls.



## SCL2

### Round Mini LED Panel

- Selectable wattage
- 30,000 Hrs. L70 lifetime
- 4000K or 5000K CCT
- 120-277V input
- 9" Round Model
- 80+ CRI
- Surface mounted
- Integrated occupancy and photocell sensor

MODEL	CCT	WATTAGE	LUMENS	EFFICACY
SCL2-9-UNVL-10 (10W/15W/18W)	5000K	10.0W	1,213	121 LPW
	5000K	15.0W	1,693	113 LPW
	5000K	18.0W	1,987	110 LPW





## TDK1/TEG1

### LED Recessed Troffer

- TDK (retrofit kit)
- TEG (new construction)
- >161,000 Hrs. L70 lifetime
- 3000K, 3500K, 4000K, 5000K
- 120-277V input
- 80+ CRI
- 1x4 or 2x4 models
- Recessed or surface mount
- Air return venting and battery backup options

MODEL	CCT	WATTAGE	LUMENS	EFFICACY
<b>TEG/TKD 14-25</b>	5000K	25.3W	3,320	132 LPW
<b>TEG/TKD 14-30</b>	5000K	30.6W	3,980	130 LPW
<b>TEG/TKD 24-25</b>	5000K	24.7W	3,520	141 LPW
<b>TEG/TKD 24-30</b>	5000K	30.5W	3,910	128 LPW
<b>TEG/TKD 24-40</b>	5000K	40.0W	5,128	128 LPW



## TEG4 ESSENTIAL

### LED Recessed Low-Profile Troffer

- Selectable CCT and wattage
- 1x4, 2x2, or 2x4 models
- 3500K, 4000K, & 5000K CCT
- 87,000 Hrs. L70 lifetime
- 120-277V input
- Battery back-up option
- Surface mount kit, drywall flange kit, and motion sensor accessories available

MODEL	CCT	WATTAGE	LUMENS	EFFICACY
<b>TEG4-1-14-UNVL-18-SCCT</b>	5000K	17.1W	2,457.2	143.7 LPW
	5000K	25.3W	3,525.6	139.4 LPW
	5000K	34.5W	4,646.2	134.7 LPW
<b>TEG4-1-22-UNVL-18-SCCT</b>	5000K	17.2W	2,538.1	147.6 LPW
	5000K	25.5W	3,607.2	141.5 LPW
	5000K	35.0W	4,679.5	133.7 LPW
<b>TEG4-1-24-UNVL-26-SCCT</b>	5000K	24.5W	3,641.5	148.6 LPW
	5000K	32.3W	4,691.6	145.3 LPW
	5000K	40.6W	5,732.2	141.2 LPW



## USL1

### LED Linear Strip

- Selectable wattage and CCT
- >161,000 Hrs. L70 lifetime
- 3500K, 4000K, or 5000K CCT
- 120-277V input
- Suspended or surface mounted
- Battery backup and motion sensor options available

MODEL	CCT	WATTAGE	LUMENS	EFFICACY
<b>USL1-4-UNV-SCCT</b> 25W/35W/45W	3500K	24.6W	3619.4	147.1 LPW
	4000K	23.6W	3644.3	152.5 LPW
	5000K	24.4W	3562.6	146.0 LPW
	3500K	35.4W	5044.6	142.5 LPW
	4000K	34.7W	5244.3	151.1 LPW
	5000K	36.0W	5062.9	140.6 LPW
	3500K	45.2W	6087.5	134.7 LPW
	4000K	43.9W	6437.5	146.6 LPW
	5000K	45.3W	6106.4	134.8 LPW





REFRIGERATION  
LED LIGHTING  
SOLUTIONS



ecostar5



# ECOSTAR<sup>®</sup>5

## Refrigerated Display LED Lighting

- Optimized for coolers, freezer doors, and open case shelves
- Unit lengths from 2 ft. to 6 ft.
- >50,000 Hrs. L70 lifetime
- 3000K, 4000K, or 5000K
- 120-277V input
- Internal driver; no need to mount external power source
- 80+ CRI
- Surface-mount ready and can be connected for longer runs

MODEL	CCT	WATTAGE	LUMENS	EFFICACY
ESRP5-08	5000K	8.0W	1,040	130 LPW
ESRP5-15	5000K	15.0W	1,800	120 LPW
ESRP5-18	5000K	18.0W	2,340	130 LPW
ESRP5-22	5000K	22.0W	2,860	130 LPW
ESRP5-30	5000K	30.0W	3,800	127 LPW

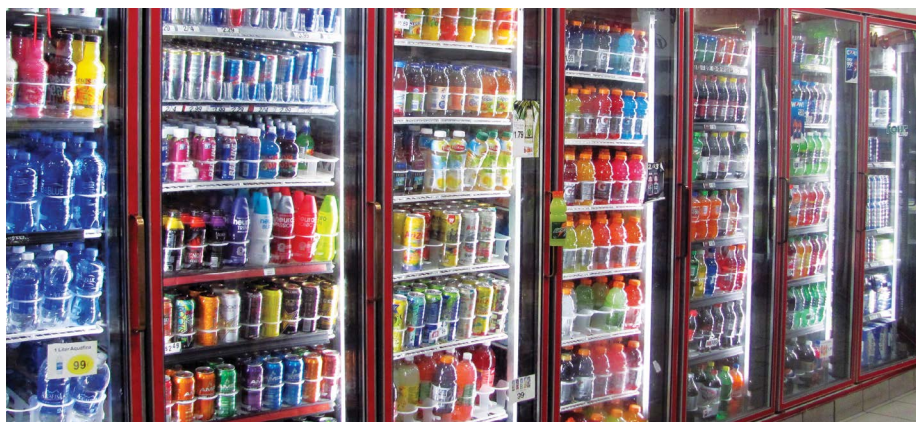


# VAPORSTAR

## LED Vapor Tight Enclosed

- >161,000 Hrs. L70 lifetime
- 5000K CCT
- 120-277V input
- 82+ CRI
- Enclosed and gasketed
- Suitable for wet locations
- Knockouts and end plugs for wiring access in the field

MODEL	CCT	WATTAGE	LUMENS	EFFICACY
VTF1-1-4-UNVL-40	5000K	40.0W	5,200	130 LPW
VTF1-1-4-UNVL-55	5000K	55.0W	7,040	128 LPW





LED LAMP  
SOLUTIONS



## TYPE B T8/T10

### LED Linear Lamps

- Type B - internal driver bypasses existing ballasts
- 200,000 Hrs. L70 lifetime
- 3500K, 4000K, or 5000K CCT
- 120-277V input
- ≥ 80+ CRI
- 4 ft. or 8 ft. snap-in option with single or bi-pin
- Starting at 8.9W
- Single or double-ended options available
- Instant on - no delay

Consult factory for current available wattages and options.



## LONE STAR

### Single Lamp Strip Housing

- Narrow single lamp strip housing for general lighting
- Housing is die-formed and embossed code 22 gauge steel.
- Wiring knockouts provided
- Surface mounted or suspended with chain
- Complies with UL 1598 for continuous row mounting
- Lamps sold separately

MODEL	MODEL DESCRIPTION
LS-1-4	LoneStar   48" Housing   48" T8 Lamp Length
LS-2-4	LoneStar   96" Housing   48" T8 Lamp Length

Consult factory for available lengths to accommodate tube types.



## TWIN STAR

### Twin Lamp Strip Housing

- Double lamp strip housing for general lighting applications
- Housing is die-formed and embossed code 22 gauge steel.
- Wiring knockouts provided
- Surface mounted or suspended with chain
- Complies with UL 1598 for continuous row mounting
- Lamps sold separately

MODEL	MODEL DESCRIPTION
TWS1	TwinStar   48" Length   48" T8 Lamp Length
TWS1-T	TwinStar Tandem   96" Length   48" T8 Lamp Length

Consult factory for available lengths to accommodate tube types.



## PAR30

### LED Lamps

- >60,000 Hrs. L70 lifetime
- 3500K, 4000K, or 5000K CCT
- 120V input
- Internal driver
- 11W
- ≥ 90+ CRI
- 40° beam angle
- E26 standard base

Please consult factory for current available wattages and options.



OUTDOOR  
LED LIGHTING  
SOLUTIONS



# CANOPYSTAR XL

## LED Gas Canopy Light

- >100,000 Hrs. L70 lifetime
- 4000K or 5000K CCT
- 120-277V or 277-480V input
- 80+ CRI
- IES Type VS distribution for uniform lighting
- Direct surface mount or recessed J-Box

MODEL	CCT	WATTAGE	LUMENS	EFFICACY
GCL1-07-UNVL-50-F-WH	5000K	73.3W	11,314	154 LPW
GCL1-13-UNVL-50-F-WH	5000K	131.8W	20,285	153 LPW
GCL1-15-UNVL-50-F-WH	5000K	152.4W	22,831	150 LPW



# CANOPYSTAR XL2

## LED Gas Canopy Light

- ≥50,000 Hrs. L70 lifetime
- 4000K or 5000K CCT
- 120-277V or 277-480V input
- 90+ CRI
- IES Type VS distribution for uniform lighting
- Direct surface mount or recessed J-Box

MODEL	CCT	WATTAGE	LUMENS	EFFICACY
GCL2-11-UNVL-50-F-WH	5000K	110.0W	15,070	137 LPW
GCL2-15-UNVL-50-F-WH	5000K	150.0W	20,700	138 LPW



# ECONIGHT® 4

## LED Wall Pack

- >167,000 Hrs. L70 lifetime
- 4000K or 5000K CCT
- 120-277V input
- 70+ CRI
- Die-cast aluminum housing
- Full cutoff design to eliminate forward/upward light (Type 3S)
- Wall mount

MODEL	CCT	WATTAGE	LUMENS	EFFICACY
ULFC1-1-24	5000K	23.0W	4,025	174 LPW
ULFC1-1-32	5000K	31.0W	5,394	171 LPW
ULFC1-1-40	5000K	39.0W	6,634	168 LPW
ULFC1-1-45	5000K	47.0W	7,933	168 LPW
ULFC1-1-60	5000K	62.0W	10,308	166 LPW
ULFC1-1-75	5000K	75.0W	12,375	165 LPW





## L-GRID® 2EH 1X1

### LED Soffit & Canopy Light

- 200,000 Hrs. L70 lifetime
- 3500K, 4000K, or 5000K CCT
- 120-277V input
- 80+ CRI
- Low-profile; only 3.2" high
- Recessed or surface mount
- Photocell and battery backup options available

MODEL	CCT	WATTAGE	LUMENS	EFFICACY
GTR2-11EH-50	5000K	23.5W	2,789	118 LPW



## NIGHT GUARD®

### LED Flood Light | Selectable Options

- Selectable CCT and wattage
- >146,000 Hrs. L70 lifetime
- 3000K, 4000K, or 5000K CCT
- Integrated photocell
- 120-277V input; 70+ CRI
- NEMA optic; 7Hx7V
- 1/2" NPT knuckle included
- Multiple mounting accessories and color finishes available

MODEL	CCT	WATTAGE	LUMENS	EFFICACY
NGFL-18-SCCT	5000K	18.0W	2,953.8	170.7 LPW
NGFL-18-SCCT	5000K	24.0W	3,819.3	165.3 LPW
NGFL-18-SCCT	5000K	30.0W	4,935.3	158.2 LPW
NGFL-60-SCCT	5000K	60.0W	9,127.3	159.8 LPW
NGFL-60-SCCT	5000K	80.0W	12,223.0	151.7 LPW
NGFL-60-SCCT	5000K	100.0W	15,039.0	144.5 LPW



NIGHT Guard



## QUBEPARK SELECT

### LED Garage Canopy Light

- Selectable CCT and wattage
- 185,000 Hrs. L70 lifetime
- 3000K, 4000K, or 5000K CCT
- Integrated photocell
- 120-277V input; 80+ CRI
- IES Type V distribution
- Surface or pendant mounting
- Battery back-up option
- PIR Sensor, Microwave Sensor, or Casambi Controls Available

MODEL	CCT	WATTAGE	LUMENS	EFFICACY
QPS1-40	5000K	24.5W	3,440	140 LPW
	5000K	31.6W	4,513	143 LPW
	5000K	39.6W	5,652	143 LPW
QPS1-80	5000K	46.2W	7,498	162 LPW
	5000K	62.1W	9,751	157 LPW
	5000K	79.0W	12,058	153 LPW





## QUBEPAK® 4

### LED Wall Pack

- >167,000 Hrs. L70 lifetime
- 5000K CCT
- 120-277V input
- 70+ CRI
- Die-cast aluminum housing
- High-impact, heat-resistant borosilicate glass lens
- Wall mount

MODEL	CCT	WATTAGE	LUMENS	EFFICACY
ULWL1-1-24	5000K	23.0W	3,994	173 LPW
ULWL1-1-32	5000K	32.0W	5,447	170 LPW
ULWL1-1-40	5000K	38.0W	6,545	168 LPW
ULWL1-1-72	5000K	74.0W	12,528	169 LPW
ULWL1-1-96	5000K	97.0W	16,099	165 LPW
ULWL1-1-120	5000K	119.0W	19,664	164 LPW



## QUBEPAK® REGAL 3

### LED Wall Pack

- 167,000 Hrs. L70 lifetime
- 5000K CCT
- 120-277V input
- 70+ CRI
- Type II IES distribution
- Adjustable, full cutoff with a tilt mechanism for aiming
- Photocell option available

MODEL	CCT	WATTAGE	LUMENS	EFFICACY
WPR3-24	5000K	23.2W	4,038.4	174.1 LPW
WPR3-32	5000K	31.2W	5,335.5	171.0 LPW
WPR3-40	5000K	39.2W	6,573.9	167.7 LPW
WPR3-60	5000K	61.2W	10,859.0	177.4 LPW
WPR3-80	5000K	80.3W	13,938.0	173.5 LPW
WPR3-100	5000K	101.6W	17,299.0	170.3 LPW



# RIGHT CHOICE SERIES

LED Area/Site Light | Selectable Options

- Selectable CCT - 3000K, 4000K, or 5000K CCT
- ≥167,000 Hrs. L70 lifetime
- 120-277V or 347-480V input
- Multiple mounting options
- 80+ CRI
- Precision-molded optics; rotatable optics available (consult factory)
- Photocell, motion sensor, and shield accessories available



RightChoice



		3000K CCT			4000K CCT			5000K CCT		
Model	Optic	Watts	Lumens	Efficacy	Watts	Lumens	Efficacy	Watts	Lumens	Efficacy
Model 15 100W	Type 2	102.5W	15,247	148.8 LPW	97.8W	15,994	163.5 LPW	98.9W	15,776	159.5 LPW
	Type 3	102.8W	15,366	149.5 LPW	97.9W	16,067	164.1 LPW	99.1W	15,882	160.3 LPW
	Type 4	103.3W	15,235	147.5 LPW	98.3W	15,852	161.3 LPW	99.3W	15,649	157.6 LPW
	Type 5	103.9W	15,374	148.0 LPW	100.0W	16,444	164.4 LPW	100.0W	15,950	159.5 LPW
Model 15 120W	Type 2	118.0W	17,244	146.1 LPW	112.1W	18,075	161.2 LPW	113.6W	17,771	156.4 LPW
	Type 3	118.2W	17,389	147.1 LPW	112.0W	18,163	162.2 LPW	113.6W	17,865	157.3 LPW
	Type 4	118.5W	17,164	144.8 LPW	112.3W	17,946	159.8 LPW	113.8W	17,557	154.3 LPW
	Type 5	121.0W	18,481	152.7 LPW	119.6W	19,933	166.6 LPW	120.0W	19,334	161.1 LPW
Model 15 150W	Type 2	156.6W	21,767	139.0 LPW	147.7W	23,117	156.5 LPW	151.7W	22,687	149.6 LPW
	Type 3	156.5W	21,859	139.7 LPW	147.3W	22,688	154.0 LPW	150.2W	22,355	148.8 LPW
	Type 4	156.6W	21,533	137.5 LPW	149.9W	22,395	149.4 LPW	150.3W	21,978	146.2 LPW
	Type 5	150.2W	22,448	149.5 LPW	145.3W	24,393	167.9 LPW	151.0W	24,100	159.6 LPW
Model 30 200W	Type 2	201.6W	30,195	149.8 LPW	189.6W	32,862	173.3 LPW	200.0W	31,400	157.0 LPW
	Type 3	199.2W	29,993	150.6 LPW	200.3W	32,457	162.0 LPW	201.1W	31,867	158.5 LPW
	Type 4	200.0W	30,279	151.4 LPW	198.1W	32,921	166.2 LPW	202.0W	31,549	156.2 LPW
	Type 5	200.0W	30,864	154.3 LPW	200.0W	32,840	164.2 LPW	200.0W	31,508	157.5 LPW
Model 30 240W	Type 2	241.8W	36,232	149.8 LPW	239.6W	39,433	164.6 LPW	242.0W	37,678	155.7 LPW
	Type 3	240.0W	35,959	149.8 LPW	240.0W	38,947	162.3 LPW	240.0W	38,221	159.3 LPW
	Type 4	240.0W	36,333	151.4 LPW	238.1W	39,504	165.9 LPW	239.0W	37,857	158.4 LPW
	Type 5	239.8W	37,034	154.4 LPW	239.6W	39,406	164.5 LPW	240.0W	37,808	157.5 LPW
Model 30 300W	Type 2	301.8W	45,290	150.1 LPW	289.6W	49,291	170.2 LPW	302.8W	47,097	155.5 LPW
	Type 3	303.2W	44,987	148.4 LPW	290.3W	48,684	167.7 LPW	310.1W	47,777	154.1 LPW
	Type 4	300.0W	45,417	151.4 LPW	288.1W	49,380	171.4 LPW	302.0W	47,321	156.7 LPW
	Type 5	309.6W	46,293	149.5 LPW	290.0W	49,257	169.9 LPW	302.9W	47,260	156.0 LPW
Model 48 480W	Type 2	474.4W	69,740	147.0 LPW	455.3W	75,523	165.9 LPW	474.5W	73,676	155.3 LPW
	Type 3	483.7W	72,818	150.5 LPW	454.6W	77,639	170.8 LPW	474.3W	75,166	158.5 LPW
	Type 4	472.3W	70,949	150.2 LPW	451.6W	77,343	171.3 LPW	470.2W	74,713	158.9 LPW
	Type 5	473.7W	71,551	151.0 LPW	455.1W	77,564	170.4 LPW	475.7W	76,772	161.3 LPW



SPORTS LED  
LIGHTING  
SOLUTIONS

## PCLS

### LED RGB Sports Lighting

- >50,000 Hrs. L70 lifetime
- RGB LEDs (Red/Green/Blue)
- 277-480V input
- 800W total output
- Specialized NEMA lens optics
- Multiple mounting options and accessories available
- Intelligent lighting controls



PCLS-800 Model	
LED Type	Lumen Output
Red LEDs	4,388
Blue LEDs	2,231
Green LEDs	31,838
White LEDs	25,610



## RSL1

### LED Round Sports Lighting

- 174,000 Hrs. L70 lifetime
- 4000K, 5000K, 5700K CCT
- 120-277V or 277-480V input
- 70+ CRI
- Specialized NEMA lens optics
- Multiple mounting options and accessories available
- Intelligent lighting controls



MODEL	CCT	WATTAGE	LUMENS	EFFICACY
RSL1-500-57	5700K	500W	77,713	152 LPW
RSL1-600-57	5700K	600W	84,209	139 LPW
RSL1-750-57	5700K	750W	112,375	153 LPW
RSL1-1000-57	5700K	1,000W	112,375	152 LPW
RSL1-1200-57	5700K	1,200W	183,756	153 LPW



## SQL1

### LED Square Sports Lighting

- 162,000 Hrs. L70 lifetime
- 4000K, 5000K, 5700K CCT
- 120-277V or 277-480V input
- 70+ CRI
- Specialized NEMA lens optics
- Multiple mounting options and accessories available
- Intelligent lighting controls



MODEL	CCT	WATTAGE	LUMENS	EFFICACY
SQL1-500-57	5700K	512.9W	81,975.5	159.8 LPW
SQL1-600-57	5700K	613.6W	92,606.1	150.9 LPW
SQL1-1000-57	5700K	1,023.2W	164,455.7	160.7 LPW
SQL1-1200-57	5700K	1,218.6W	183,589.8	150.7 LPW
SQL1-1500-57	5700K	1,529.4W	246,479.7	161.2 LPW
SQL1-1800-57	5700K	1,830.03W	274,614.3	150.1 LPW



SIGN CABINET &  
CHANNEL LETTER  
LED LIGHTING  
SOLUTIONS



**LINEARSTAR®**



## LINEARSTAR®

### LED Sign Lighting & Wall Washer

- >163,000 Hrs. L70 lifetime
- 5000K CCT
- 120-277V input
- 80+ CRI
- Adjustable swivel head aiming
- Scaled to illuminate any length of flat or embossed surface
- Surface mounting allows close proximity to walls or signage
- Refractive optics project uniform light across surface

MODEL	CCT	WATTAGE	LUMENS	EFFICACY
<b>SKT1-1-37-XX-1</b> (1 ft. Length)	5000K	3.7W	340	92 LPW
<b>SKT1-1-37-XX-4</b> (4 ft. Length)	5000K	16.4W	1,507	92 LPW



**TDXL2**



## TDXL2 MODULES

### LED Sign Cabinet Lighting

- 200,000 Hrs. L70 lifetime
- 3000K, 4000K, 5000K, or 6500K CCT
- 24VDC input
- 70+ CRI
- Single or double-sided modules
- 170° beam angle
- 3"-18" from sign cabinet face
- Power supply and enclosure accessories available

MODEL	CCT	WATTAGE	LUMENS	EFFICACY
<b>TDXL2-1-S-24-W</b>	6500K	2.5W	400	160 LPW
<b>TDXL2-1-S-24-W</b>	6500K	5.0W	800	160 LPW



## TX2L-TDXL2 RETROFIT KITS

### LED Sign Cabinet Lighting

- 200,000 Hrs. L70 lifetime
- 3000K, 4000K, 5000K, or 6500K CCT
- 24VDC input
- 70+ CRI
- Single or double-sided modules
- LED modules mounted on an aluminum extrusion to install in existing fluorescent sockets
- Custom lengths available
- 3"-18" from sign cabinet face
- Power supply and enclosure accessories available

MODEL	CCT	SIDES	MODULES	WATTS	LUMENS	EFFICACY
<b>TX2L-4-24-S-3-48-W</b>	6500K	Single	3 Qty.	7.5W	1,200	160 LPW
<b>TX2L-4-24-S-4-48-W</b>	6500K	Single	4 Qty.	10.0W	1,600	160 LPW
<b>TX2L-4-24-D-3-48-W</b>	6500K	Double	3 Qty.	15.0W	2,400	160 LPW
<b>TX2L-4-24-D-4-48-W</b>	6500K	Double	4 Qty.	20.0W	3,200	160 LPW



## POINT XL2 MODULES

### LED Channel Letter Lighting

- Available white (3000K-6500K), red (623nm), and green (525nm)
- 175° beam angle
- 12VDC input
- 2"-12" channel letter depths
- 70+ CRI
- Power supply and enclosure accessories available

MODEL	CCT	WATTS	LUMENS	EFFICACY
PXL2-2-12-W	6500K	1.15W/ft.	196 lumens/ft.	170 LPW
PXL2-2-12-R	Red (623nm)	1.1W/ft.	48 lumens/ft.	45 LPW
PXL2-2-12-G	Green (525nm)	1.6W/ft.	140 lumens/ft.	88 LPW
PXL2-2-12-B	Blue (465nm)	1.6W/ft.	35 lumens/ft.	22 LPW



## SAVER XL2 MODULES

### LED Channel Letter Lighting

- Available in 3000K, 4000K, 5000K, and 6500K CCT
- 175° beam angle
- 12-24VDC input
- 70+ CRI
- 1"-12" channel letter depths
- Power supply and enclosure accessories available

MODEL	CCT	WATTS	LUMENS	EFFICACY
SXL2-1-12-W	6500K	.72W/ft.	122/ft.	170 LPW



## PSB SERIES

### Power Supply Units

- For use in signage applications
- Suitable for damp locations
- 90-305VAC input
- Housing designed for high thermal capability
- 12-24VDC output
- Complies with UL879, UL8750, UL1310 and CSA 22.2
- IP66 rating

MODEL	MODEL DESCRIPTION
PSB-1-12-12	12V/12W Power Supply Unit
PSB-1-12-60	12V/60W Power Supply Unit
PSB-1-24-96	24V/96W Power Supply Unit





LIFE SAFETY  
LED LIGHTING  
SOLUTIONS



## EMERGENCY EXIT SIGN

Life Safety LED Lighting

- Large illuminated red letters
- Snap out directional indicators
- 1.2V rechargeable battery: 90 min. of emergency operation
- Automatic two-rate charger will recharge discharged battery in 24 hours
- Easy canopy or wall mounting



MODEL	VOLTAGE
ESX1	120-277VAC



## SLIM DUAL LED EXIT SIGN COMBO

Life Safety LED Lighting

- Ultra-long life LED lamp heads
- Large illuminated red letters
- 3.6V rechargeable battery: 90 min. of emergency operation
- Automatic two-rate charger will recharge battery in 24 hours
- Single or dual faced standard
- Easy canopy or wall mounting



MODEL	VOLTAGE	LUMENS
ESEM-PC-UNVL-2-RC	120-277VAC	200



## DUAL HEAD EMERGENCY LIGHT

Life Safety LED Lighting

- Ultra-long life LED lamp heads
- Adjustable heads for spacing
- 3.6V rechargeable battery: 90 min. of emergency operation
- Automatic two-rate charger will recharge discharged battery in 24 hours
- Easy canopy or wall mounting



MODEL	VOLTAGE	LUMENS
EM-PC-UNVL-2-RC	120-277VAC	200



# SINGLE HEAD REMOTE LAMP

Life Safety LED Lighting

- Ultra-long life LED lamp head
- Remote capability
- Easy canopy or wall mounting
- Suitable for outdoor environments
- Injection-molded thermoplastic ABS housing



MODEL	VOLTAGE	LUMENS
EM-PC-24-1-RC	3.6-24VDC	100



# DECORATIVE EMERGENCY UNIT

Life Safety LED Lighting

- Decorative low-profile design
- Suitable for wet locations
- 4.8V rechargeable battery; 90 min. of emergency operation
- Automatic two-rate charger will recharge battery in 24 hours
- Photocell sensor for use as dusk-to-dawn light



MODEL	VOLTAGE	LUMENS
DBEL-ACEM-HL-BR-SDT-CW-PC	120-277VAC	1,286





**US LED**  
*Always the Right Choice!*

866-972-9191  
customerservice@usled.com  
www.usled.com

©2025 US LED™ All Rights Reserved.  
For informational purposes only. Not a warranty or specification.  
See [www.usled.com](http://www.usled.com) for specifications and warranty.  
101525