



USLED
Always the Right Choice!

QUICK REFERENCE PRODUCT GUIDE



USLED™

Always the Right Choice!

WE DO THE
RIGHT THINGS,
THE RIGHT WAY,
AND ON TIME.





INDOOR LED
LIGHTING
SOLUTIONS

APEX SELECT

LED Downlight | Selectable Options

- 4" Round or Square Trim
- Selectable wattage and CCT
- Suitable for damp locations
- ≥50,000 Hrs. L70 lifetime
- 120-347V input; 80+ CRI
- 3000K, 3500K, or 4000K CCT
- Mounts in ceiling with spring action clips (IC rated)

MODEL	CCT	WATTAGE	LUMENS	EFFICACY
ASD1-20-SCCT 10W/15W/20W	4000K	9.9W	770	77.8 LPW
	4000K	15.0W	1,130	75.3 LPW
	4000K	19.6W	1,404	71.6 LPW
ASD1-40-SCCT 27W/34W/40W	4000K	27.8W	2,505	90.1 LPW
	4000K	34.0W	2,847	83.7 LPW
	4000K	39.7W	3,158	76.1 LPW



EXSABAY® INFINITY

LED Round High Bay

- >100,000 Hrs. L70 lifetime
- 4000K or 5000K CCT
- 90-305V or 347-480V input.
- White or black finish
- 80+ CRI
- Hook mount accessory
- Clear polycarbonate reflector accessory
- Sensor and battery backup accessories

MODEL	CCT	WATTAGE	LUMENS	EFFICACY
EBI1-A	4000K	81.7W	11,685	143 LPW
EBI1-B	4000K	103.7W	14,934	144 LPW
EBI1-C	4000K	123.4W	18,325	149 LPW
EBI1-D	4000K	150.9W	22,214	147 LPW
EBI1-E	4000K	205.5W	29,970	146 LPW
EBI1-F	4000K	245.9W	35,683	145 LPW
EBI1-G	4000K	306.5W	44,923	147 LPW



EXSABAY® XTREME COMPACT

LED Linear High Bay

- Selectable CCT (4000K or 5000K)
- 120-277V or 277-480V
- >167,000 Hrs. L70 lifetime
- Suspended, surface, or pendant mounted
- Sensor, wireguard, and battery backup accessories

MODEL	CCT	OPTIC	WATTAGE	LUMENS	EFFICACY
EBXC1-90	5000K	90°	90.0W	14,850	165 LPW
EBXC1-150	5000K	90°	150.0W	24,750	165 LPW
EBXC1-188	5000K	90°	188.0W	31,020	165 LPW
EBXC1-200	5000K	90°	200.0W	33,000	165 LPW
EBXC1-220	5000K	90°	220.0W	36,300	165 LPW
EBXC1-255	5000K	90°	255.0W	42,074	165 LPW
EBXC1-300	5000K	90°	300.0W	49,500	165 LPW
EBXC1-375	5000K	90°	375.0W	61,875	165 LPW
EBXC1-440	5000K	90°	440.0W	72,600	165 LPW





FM1 LED Architectural Pendant

- >36,000 Hrs. L70 lifetime
- 3500K, 4000K, or 5000K CCT
- 120-277V input
- 80+ CRI
- Choice of powder coat finish
- Canopy and power cable match the shade color finish
- Frosted acrylic lens



MODEL	CCT	WATTAGE	LUMENS	EFFICACY
FM1-X-X-50-060	5000K	20.3W	2,190	108 LPW
FM1-X-X-50-080	5000K	26.8W	2,810	105 LPW
FM1-X-X-50-105	5000K	35.3W	3,550	101 LPW
FM1-X-X-50-120	5000K	41.0W	3,950	96 LPW
FM1-X-X-50-140	5000K	48.1W	4,570	95 LPW



HLS2 High Output LED Linear Strip

- High-output performance from a sleek linear design (IP66)
- ≥167,000 Hrs. L70 lifetime
- 3500K, 4000K, or 5000K CCT
- 120-277V only
- Surface mounted or suspended with cables
- Linkable-M20 cable gland entry



MODEL	CCT	WATTAGE	LUMENS	EFFICACY
HLS2-1-4-UNVL-80-50	5000K	78.7W	12,676	161 LPW



L-GRID® ESSENTIAL SELECT Back-Lit LED Flat Panel | Selectable Options

- Selectable wattage and CCT
- >50,000 Hrs. L70 lifetime
- 3500K, 4000K, or 5000K CCT
- 120-277V input
- 82+ CRI
- Recessed, cable or surface mount options
- Battery back-up available



MODEL	CCT	WATTAGE	LUMENS	EFFICACY
FTR5-14	5000K	19.7W	2,525	128 LPW
FTR5-14	5000K	30.0W	3,685	123 LPW
FTR5-14	5000K	38.9W	4,759	122 LPW
FTR5-22	5000K	20.2W	2,549	126 LPW
FTR5-22	5000K	29.8W	3,720	125 LPW
FTR5-22	5000K	39.4W	4,804	122 LPW
FTR5-24	5000K	28.9W	3,612	125 LPW
FTR5-24	5000K	37.9W	4,743	125 LPW
FTR5-24	5000K	48.0W	5,946	124 LPW



L-GRID® PROMAX SELECT

Back-Lit LED Flat Panel | Selectable Options

- Selectable wattage and CCT
- 165,000 Hrs. L70 lifetime
- 3000K, 3500K, 4000K, 5000K or 6500K CCT
- 120-277V input
- 82+ CRI
- Recessed or surface mount
- Battery back-up available
- Larger junction box for easier wiring and installation

MODEL	CCT	WATTAGE	LUMENS	EFFICACY
FTR4-14	5000K	26.0W	3,874	149 LPW
	5000K	31.9W	4,672	146 LPW
	5000K	37.9W	5,451	144 LPW
FTR4-22	5000K	26.0W	3,874	149 LPW
	5000K	31.9W	4,672	146 LPW
	5000K	37.9W	5,451	144 LPW
FTR4-24	5000K	31.9W	4,995	157 LPW
	5000K	39.6W	6,085	154 LPW
	5000K	48.8W	7,330	150 LPW



L-GRID® ESSENTIAL SELECT

High Output LED Flat Panel

- >181,000 Hrs. L70 lifetime
- 3500K, 4000K, or 5000K CCT
- 120-277V input
- 80+ CRI
- Recessed mount in standard T-Grid ceilings
- Plenum air return option
- Battery back-up available

MODEL	CCT	WATTAGE	LUMENS	EFFICACY
GTR2-22EH-H	5000K	195.7W	21,480	110 LPW



L-TRIM DISK

LED Downlight Kit

- Kit fits most existing 4"-6" recessed downlight fixtures
- Suitable for wet locations
- 140,000 Hrs. L70 lifetime
- 120V input; 3000K CCT
- Triac dimming capable
- Surface mount to standard 4" J-Box or direct wire

MODEL	CCT	WATTAGE	LUMENS	EFFICACY
USCD1-12-30	3000K	12.0W	1,090	91 LPW



L-TRIM SOL XLE SELECT

LED Downlight | Selectable Options

- Selectable wattage and CCT
- Suitable for wet locations
- ≥60,000 Hrs. L70 lifetime
- 120-277V input; 80+ CRI
- 2700K, 3000K, 3500K, 4000K or 5000K CCT
- Mounts in ceiling with spring action clips (IC rated)

MODEL	CCT	WATTAGE	LUMENS	EFFICACY
LTR4-6R-UNV-2-SCCT-WH (6" Round) 9W/13W/19W	5000K	8.7W	968	111 LPW
	5000K	13.7W	1,439	105 LPW
	5000K	18.1W	1,803	99.6 LPW



L-TRIM SOL XLE2 SELECT

High Output LED Downlight | Selectable Options

- Selectable wattage and CCT
- Suitable for wet locations
- ≥50,000 Hrs. L70 lifetime
- 3000K, 4000K, or 5000K CCT
- 120-277V input.
- 90+ CRI
- Mounts in ceiling with spring action clips (IC rated)

MODEL	CCT	WATTAGE	LUMENS	EFFICACY
LTR5-6R (6") 20W/30W/40W	5000K	20.0W	2,200	110 LPW
	5000K	30.0W	3,200	107 LPW
	5000K	41.5W	4,500	108 LPW
LTR5-8R (8") 40W/50W/60W	5000K	40.0W	4,300	108 LPW
	5000K	50.0W	5,250	105 LPW
	5000K	60.0W	6,200	103 LPW



LAS1

LED Linear Architectural Strip

- Selectable CCT
- >50,000 Hrs. L70 lifetime
- 3000K, 4000K, or 5000K CCT
- 120-277V input
- 82+ CRI
- 4 ft. sleek design with no visible hardware or holes.
- Cable suspended, surface mounted, wall mounted, or recessed (T-Bar).

MODEL	CCT	WATTAGE	LUMENS	EFFICACY
LAS1-4-30-UNVL	3000K	30.1W	3,894	129.4 LPW
	4000K	29.5W	3,988	135.2 LPW
	5000K	30.3W	3,958	130.6 LPW

LLT1

LED Linear Linkable Strip | Selectable Options

- Selectable wattage and CCT
- >181,000 Hrs. L70 lifetime
- 3000K, 4000K, or 5000K CCT
- 120-277V input
- 82+ CRI
- Fixture housing locks into place with an alignment channel bracket
- Battery backup and motion sensor options available

MODEL	CCT	WATTAGE	LUMENS	EFFICACY
LLT1-2-25 15W/20W/25W	5000K	14.88W	2,284	153 LPW
		19.53W	3,034	154 LPW
		23.95W	3,626	151 LPW
LLT1-4-40 25W/30W/40W	5000K	24.55W	3,752	153 LPW
		30.30W	4,585	151 LPW
		40.36W	5,945	147 LPW
LLT1-8-60 50W/60W/80W	5000K	49.10W	7,504	153 LPW
		60.60W	9,170	151 LPW
		80.72W	11,890	147 LPW



LMU1

Under Shelf LED Linear Strip

- Optimized for under shelf, retail, or cabinet applications
- 36" Length
- 3000K, 4000K, or 5000K
- 120V input
- 80+ CRI
- Mounted with magnets or self-tapping screws
- Optional motion sensor with six minute display

MODEL	CCT	WATTAGE	LUMENS	EFFICACY
LMU1-1-12-36	5000K	12.0W	1,200	100 LPW



LSF1

LED Linear Wrap

- >161,000 Hrs. L70 lifetime
- 4000K, 5000K, or Tunable White (2700-6500K)*
- 120-277V input
- 4 ft. or 8 ft. models
- 80+ CRI
- Suspended or surface mounted
- Wider 14" base option for larger footprints

MODEL	CCT	WATTAGE	LUMENS	EFFICACY
LSF1-X-4-UNVL-25	5000K	25.0W	3,430	137 LPW
LSF1-X-4-UNVL-30	5000K	28.8W	4,075	142 LPW
LSF1-X-8-UNVL-50	5000K	51.1W	6,850	134 LPW



*Tunable white requires Smart Blu Bluetooth lighting controls.



RFCP

LED Architectural Pendant

- Ideal for new construction or retrofit applications
- Round metal and white fabric covered construction
- Class 2 (NEC) compliant design - low voltage
- 120-277VAC input
- E26 bask lamp holder
- Uses (1) A19 LED lamp (sold separately)
- Ready to be suspended



SCL2

Round Mini LED Panel

- Selectable wattage
- 30,000 Hrs. L70 lifetime
- 4000K or 5000K CCT
- 120-277V input
- 9" Round Model
- 80+ CRI
- Surface mounted
- Integrated occupancy and photocell sensor



MODEL	CCT	WATTAGE	LUMENS	EFFICACY
SCL2-9-UNVL-10 (10W/15W/18W)	5000K	10.0W	1,213	121 LPW
	5000K	15.0W	1,693	113 LPW
	5000K	18.0W	1,987	110 LPW



TEG4 ESSENTIAL

LED Recessed Low-Profile Troffer

- Selectable CCT and wattage
- 1x4, 2x2, or 2x4 models
- 3500K, 4000K, & 5000K CCT
- 87,000 Hrs. L70 lifetime
- 120-277V input
- Battery back-up option
- Surface mount kit, drywall flange kit, and motion sensor accessories available



MODEL	CCT	WATTAGE	LUMENS	EFFICACY
TEG4-1-14-UNVL-18-SCCT	5000K	17.1W	2,457.2	143.7 LPW
	5000K	25.3W	3,525.6	139.4 LPW
	5000K	34.5W	4,646.2	134.7 LPW
TEG4-1-22-UNVL-18-SCCT	5000K	17.2W	2,538.1	147.6 LPW
	5000K	25.5W	3,607.2	141.5 LPW
	5000K	35.0W	4,679.5	133.7 LPW
TEG4-1-24-UNVL-26-SCCT	5000K	24.5W	3,641.5	148.6 LPW
	5000K	32.3W	4,691.6	145.3 LPW
	5000K	40.6W	5,732.2	141.2 LPW



USCP

LED Architectural Pendant

- Ideal for new construction or retrofit applications
- Silver shade is resin construction with black cord
- Class 2 (NEC) compliant design - low voltage
- 120-277VAC input
- E26 bask lamp holder
- Uses (1) A19 LED lamp (sold separately)



USDS

LED Architectural Pendant

- Ideal for new construction or retrofit applications
- Anodized aluminum with opal glass globe construction
- Class 2 (NEC) compliant design - low voltage
- 120-277VAC input
- E26 bask lamp holder
- Uses (3) 5W G9 LED lamps (sold separately)



USL1

LED Linear Strip

- Selectable wattage and CCT
- >161,000 Hrs. L70 lifetime
- 3500K, 4000K, or 5000K CCT
- Suspended or surface mounted
- Battery backup and motion sensor options available



MODEL	CCT	WATTAGE	LUMENS	EFFICACY
USL1-4-UNV-SCCT 25W/35W/45W	3500K	24.6W	3619.4	147.1 LPW
	4000K	23.6W	3644.3	152.5 LPW
	5000K	24.4W	3562.6	146.0 LPW
	3500K	35.4W	5044.6	142.5 LPW
	4000K	34.7W	5244.3	151.1 LPW
	5000K	36.0W	5062.9	140.6 LPW
	3500K	45.2W	6087.5	134.7 LPW
	4000K	43.9W	6437.5	146.6 LPW
	5000K	45.3W	6106.4	134.8 LPW



USLV

LED Decorative Square Vanity

- ≥ 50,000 Hrs. L70 lifetime
- 120-277VAC input
- 3000K CCT
- 90+ CRI
- Ideal for multi-family and hospitality applications
- Die-formed cold-rolled steel in a beautiful satin nickel finish





REFRIGERATION
LED LIGHTING
SOLUTIONS



ECOSTAR[®] 5

Refrigerated Display LED Lighting

- Optimized for coolers, freezer doors, and open case shelves
- Unit lengths from 2 ft. to 6 ft.
- >50,000 Hrs. L70 lifetime
- 3000K, 4000K, or 5000K
- 120-277V input
- Internal driver; no need to mount external power source
- 80+ CRI
- Surface-mount ready and can be connected for longer runs

ecostar5 



MODEL	CCT	WATTAGE	LUMENS	EFFICACY
ESRP5-08	5000K	8.0W	1,040	130 LPW
ESRP5-15	5000K	15.0W	1,800	120 LPW
ESRP5-18	5000K	18.0W	2,340	130 LPW
ESRP5-22	5000K	22.0W	2,860	130 LPW
ESRP5-30	5000K	30.0W	3,800	127 LPW

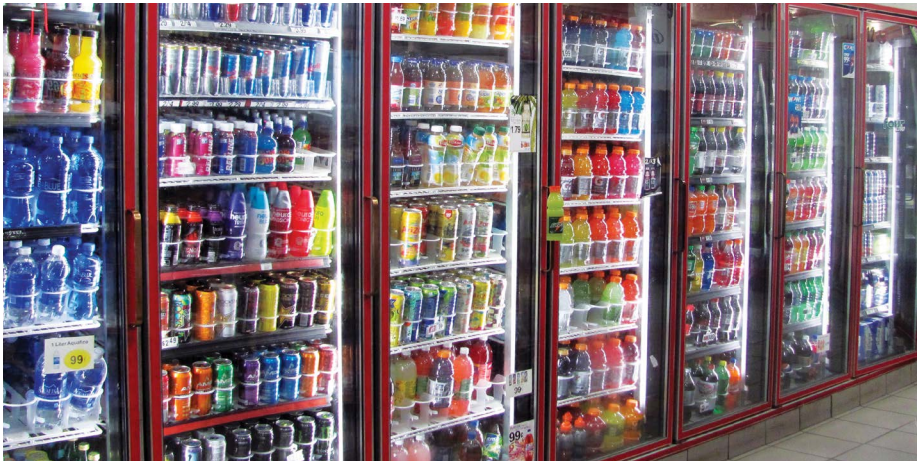


VAPORSTAR

LED Vapor Tight Enclosed

- >161,000 Hrs. L70 lifetime
- 5000K CCT
- 120-277V input
- 82+ CRI
- Enclosed and gasketed
- Suitable for wet locations
- Knockouts and end plugs for wiring access in the field

MODEL	CCT	WATTAGE	LUMENS	EFFICACY
VTF1-1-4-UNVL-40	5000K	40.0W	5,200	130 LPW
VTF1-1-4-UNVL-55	5000K	55.0W	7,040	128 LPW





LED LAMP
SOLUTIONS



TYPE B T8/T10

LED Linear Lamps

- Type B - internal driver bypasses existing ballasts
- 200,000 Hrs. L70 lifetime
- 3500K, 4000K, or 5000K CCT
- 120-277V input
- ≥ 80+ CRI
- 4 ft. or 8 ft. snap-in option with single or bi-pin
- Starting at 8.9W
- Single or double-ended options available
- Emergency option available

Consult factory for current available wattages and options.



LONE STAR

Single Lamp Strip Housing

- Narrow single lamp strip housing for general lighting
- Housing is die-formed and embossed code 22 gauge steel.
- Wiring knockouts provided
- Surface mounted or suspended with chain
- Complies with UL 1598 for continuous row mounting
- Lamps sold separately

MODEL	MODEL DESCRIPTION
LS-1-4	LoneStar 48" Housing 48" T8 Lamp Length
LS-2-4	LoneStar 96" Housing 48" T8 Lamp Length

Consult factory for available lengths to accommodate tube types.



TWIN STAR

Twin Lamp Strip Housing

- Double lamp strip housing for general lighting applications
- Housing is die-formed and embossed code 22 gauge steel.
- Wiring knockouts provided
- Surface mounted or suspended with chain
- Complies with UL 1598 for continuous row mounting
- Lamps sold separately

MODEL	MODEL DESCRIPTION
TWS1	TwinStar 48" Length 48" T8 Lamp Length
TWS1-T	TwinStar Tandem 96" Length 48" T8 Lamp Length

Consult factory for available lengths to accommodate tube types.



PAR30

LED Lamps

- >60,000 Hrs. L70 lifetime
- 3500K, 4000K, or 5000K CCT
- 120V input
- Internal driver
- 11W
- ≥ 90+ CRI
- 40° beam angle
- E26 standard base

Please consult factory for current available wattages and options.





OUTDOOR
LED LIGHTING
SOLUTIONS



CANOPYSTAR XL

LED Gas Canopy Light

- >100,000 Hrs. L70 lifetime
- 4000K or 5000K CCT
- 120-277V or 277-480V input
- 80+ CRI
- IES Type VS distribution for uniform lighting
- Direct surface mount or recessed J-Box

MODEL	CCT	WATTAGE	LUMENS	EFFICACY
GCL1-07-UNVL-50-F-WH	5000K	73.3W	11,314	154 LPW
GCL1-13-UNVL-50-F-WH	5000K	131.8W	20,285	153 LPW
GCL1-15-UNVL-50-F-WH	5000K	152.4W	22,831	150 LPW



CANOPYSTAR XL2

LED Gas Canopy Light

- ≥50,000 Hrs. L70 lifetime
- 4000K or 5000K CCT
- 120-277V or 277-480V input
- 90+ CRI
- IES Type VS distribution for uniform lighting
- Direct surface mount or recessed J-Box

MODEL	CCT	WATTAGE	LUMENS	EFFICACY
GCL2-11-UNVL-50-F-WH	5000K	110.0W	15,070	137 LPW
GCL2-15-UNVL-50-F-WH	5000K	150.0W	20,700	138 LPW



ECONIGHT[®] 4

LED Wall Pack

- >167,000 Hrs. L70 lifetime
- 4000K or 5000K CCT
- 120-277V input
- 70+ CRI
- Die-cast aluminum housing
- Full cutoff design to eliminate forward/upward light (Type 3S)
- Wall mount

MODEL	CCT	WATTAGE	LUMENS	EFFICACY
ULFC1-1-24	5000K	23.0W	4,025	174 LPW
ULFC1-1-32	5000K	31.0W	5,394	171 LPW
ULFC1-1-40	5000K	39.0W	6,634	168 LPW
ULFC1-1-45	5000K	47.0W	7,933	168 LPW
ULFC1-1-60	5000K	62.0W	10,308	166 LPW
ULFC1-1-75	5000K	75.0W	12,375	165 LPW





ECONIGHT® SOL

LED Solar Wall Pack

- >50,000 Hrs. L70 lifetime
- 5000K CCT
- DC power; LiFePO4 battery
- 70+ CRI
- Integrated polycrystalline silicon solar panel
- Remote for PIR motion sensor
- Wall mount

MODEL	CCT	WATTAGE	LUMENS	EFFICACY
ULFCS-1-DCVL-50-9	5000K	9.0W	1,500	167 LPW
ULFCS-1-DCVL-50-18	5000K	18.0W	3,000	167 LPW



L-GRID® 2EH 1X1

LED Soffit & Canopy Light

- 200,000 Hrs. L70 lifetime
- 3500K, 4000K, or 5000K CCT
- 120-277V input
- 80+ CRI
- Low-profile; only 3.2" high
- Recessed or surface mount
- Photocell and battery backup options available

MODEL	CCT	WATTAGE	LUMENS	EFFICACY
GTR2-11EH-50	5000K	23.5W	2,789	118 LPW



NIGHT GUARD®

LED Flood Light | Selectable Options

- Selectable CCT and wattage
- >146,000 Hrs. L70 lifetime
- 3000K, 4000K, or 5000K CCT
- Integrated photocell
- 120-277V input; 70+ CRI
- NEMA optic; 7Hx7V
- 1/2" NPT knuckle included
- Multiple mounting accessories and color finishes available

MODEL	CCT	WATTAGE	LUMENS	EFFICACY
NGFL-18-SCCT	5000K	18.0W	2,953.8	170.7 LPW
NGFL-18-SCCT	5000K	24.0W	3,819.3	165.3 LPW
NGFL-18-SCCT	5000K	30.0W	4,935.3	158.2 LPW
NGFL-60-SCCT	5000K	60.0W	9,127.3	159.8 LPW
NGFL-60-SCCT	5000K	80.0W	12,223.0	151.7 LPW
NGFL-60-SCCT	5000K	100.0W	15,039.0	144.5 LPW

NIGHT Guard





QUBEPAK® 4

LED Wall Pack

- >167,000 Hrs. L70 lifetime
- 5000K CCT
- 120-277V input
- 70+ CRI
- Die-cast aluminum housing
- High-impact, heat-resistant borosilicate glass lens
- Wall mount



MODEL	CCT	WATTAGE	LUMENS	EFFICACY
ULWL1-1-24	5000K	23.0W	3,994	173 LPW
ULWL1-1-32	5000K	32.0W	5,447	170 LPW
ULWL1-1-40	5000K	38.0W	6,545	168 LPW
ULWL1-1-72	5000K	74.0W	12,528	169 LPW
ULWL1-1-96	5000K	97.0W	16,099	165 LPW
ULWL1-1-120	5000K	119.0W	19,664	164 LPW



QUBEPAK® 4 COMPACT

LED Wall Pack - Small

- 9" Compact Housing
- >167,000 Hrs. L70 lifetime
- 5000K CCT
- 120-277V input
- 70+ CRI
- Die-cast aluminum housing
- High-impact, heat-resistant borosilicate glass lens



MODEL	CCT	WATTAGE	LUMENS	EFFICACY
ULWL2-1-30	5000K	28.1W	4,840.0	172.2 LPW
ULWL2-1-40	5000K	39.4W	6,657.0	169.0 LPW
ULWL2-1-50	5000K	48.9W	8,132.0	166.3 LPW



QUBEPAK® REGAL 3

LED Wall Pack

- 167,000 Hrs. L70 lifetime
- 5000K CCT
- 120-277V input
- 70+ CRI
- Type II IES distribution
- Adjustable, full cutoff with a tilt mechanism for aiming
- Photocell option available



MODEL	CCT	WATTAGE	LUMENS	EFFICACY
WPR3-24	5000K	23.2W	4,038.4	174.1 LPW
WPR3-32	5000K	31.2W	5,335.5	171.0 LPW
WPR3-40	5000K	39.2W	6,573.9	167.7 LPW
WPR3-60	5000K	61.2W	10,859.0	177.4 LPW
WPR3-80	5000K	80.3W	13,938.0	173.5 LPW
WPR3-100	5000K	101.6W	17,299.0	170.3 LPW



QUBEPARK SELECT

LED Garage Canopy Light

- Selectable CCT and wattage
- 185,000 Hrs. L70 lifetime
- 3000K, 4000K, or 5000K CCT
- Integrated photocell
- 120-277V input; 80+ CRI
- IES Type V distribution
- Surface or pendant mounted
- Battery back-up option
- PIR Sensor, Microwave Sensor, or Casambi Controls Available



MODEL	CCT	WATTAGE	LUMENS	EFFICACY
QPS1-40	5000K	24.5W	3,440	140 LPW
	5000K	31.6W	4,513	143 LPW
	5000K	39.6W	5,652	143 LPW
QPS1-80	5000K	46.2W	7,498	162 LPW
	5000K	62.1W	9,751	157 LPW
	5000K	79.0W	12,058	153 LPW



RIGHT CHOICE SERIES

LED Area/Site Light | Selectable Options

- Selectable CCT - 3000K, 4000K, or 5000K CCT
- ≥167,000 Hrs. L70 lifetime
- 120-277V or 347-480V input
- Multiple mounting options
- 80+ CRI
- Precision-molded optics; rotatable optics available (consult factory)
- Photocell, motion sensor, and shield accessories available

RightChoice



MODEL	OPTIC	WATTS	LUMENS	EFFICACY
RCALR-2 100W	Type 5	100.0W	15,950	159.5 LPW
RCALR-2 120W	Type 5	120.0W	19,334	161.1 LPW
RCALR-2 150W	Type 5	151.0W	24,100	159.6 LPW
RCALR-2 200W	Type 5	200.0W	31,508	157.5 LPW
RCALR-2 240W	Type 5	240.0W	37,808	157.5 LPW
RCALR-2 300W	Type 5	302.9W	47,260	156.0 LPW
RCALR-2 480W	Type 5	475.7W	76,772	161.3 LPW



SFAL

LED Accent Lighting Kit

- Custom lighting kit with 4 ft. extrusion, lens, LED tape light, and end caps
- Requires PSB-1-24-96 24V/96W power supply (sold separately)
- One 24V/96W power supply supports up to 16 ft. SFAL
- > 50,000 Hrs. L70 lifetime
- 4000K or 5000K CCT
- 24VDC input; 80+ CRI



MODEL	CCT	WATTAGE	LUMENS	EFFICACY
SFAL-1-50-4-24	5000K	4.4/ft.	460/ft.	140 LPW



SPORTS LED
LIGHTING
SOLUTIONS



PCLS

LED RGB Sports Lighting

- >50,000 Hrs. L70 lifetime
- RGB LEDs (Red/Green/Blue)
- 277-480V input
- 800W total output
- Specialized NEMA lens optics
- Multiple mounting options and accessories available
- Intelligent lighting controls

PCLS-800 Model	
LED Type	Lumen Output
Red LEDs	4,388
Blue LEDs	2,231
Green LEDs	31,838
White LEDs	25,610



RSL1

LED Round Sports Lighting

- 174,000 Hrs. L70 lifetime
- 4000K, 5000K, 5700K CCT
- 120-277V or 277-480V input
- 70+ CRI
- Specialized NEMA lens optics
- Multiple mounting options and accessories available
- Intelligent lighting controls

MODEL	CCT	WATTAGE	LUMENS	EFFICACY
RSL1-500-57	5700K	500W	77,713	152 LPW
RSL1-600-57	5700K	600W	84,209	139 LPW
RSL1-750-57	5700K	750W	112,375	153 LPW
RSL1-1000-57	5700K	1,000W	112,375	152 LPW
RSL1-1200-57	5700K	1,200W	183,756	153 LPW



SQSL1

LED Square Sports Lighting

- 162,000 Hrs. L70 lifetime
- 4000K, 5000K, 5700K CCT
- 120-277V or 277-480V input
- 70+ CRI
- Specialized NEMA lens optics
- Multiple mounting options and accessories available
- Intelligent lighting controls

MODEL	CCT	WATTAGE	LUMENS	EFFICACY
SQSL1-500-57	5700K	512.9W	81,975.5	159.8 LPW
SQSL1-600-57	5700K	613.6W	92,606.1	150.9 LPW
SQSL1-1000-57	5700K	1,023.2W	164,455.7	160.7 LPW
SQSL1-1200-57	5700K	1,218.6W	183,589.8	150.7 LPW
SQSL1-1500-57	5700K	1,529.4W	246,479.7	161.2 LPW
SQSL1-1800-57	5700K	1,830.03W	274,614.3	150.1 LPW



SIGN CABINET &
CHANNEL LETTER
LED LIGHTING
SOLUTIONS



LINEARSTAR®



LINEARSTAR®

LED Sign Lighting & Wall Washer

- >163,000 Hrs. L70 lifetime
- 5000K CCT
- 120-277V input
- 80+ CRI
- Adjustable swivel head aiming
- Scaled to illuminate any length of flat or embossed surface
- Surface mounting allows close proximity to walls or signage
- Refractive optics project uniform light across surface

MODEL	CCT	WATTAGE	LUMENS	EFFICACY
SKT1-1-37-XX-1 (1 ft. Length)	5000K	3.7W	340	92 LPW
SKT1-1-37-XX-4 (4 ft. Length)	5000K	16.4W	1,507	92 LPW



TDXL2



TDXL2 MODULES

LED Sign Cabinet Lighting

- 200,000 Hrs. L70 lifetime
- 3000K, 4000K, 5000K, or 6500K CCT
- 24VDC input
- 70+ CRI
- Single or double-sided modules
- 170° beam angle
- 3"-18" from sign cabinet face
- Power supply and enclosure accessories available

MODEL	CCT	WATTAGE	LUMENS	EFFICACY
TDXL2-1-S-24-W	6500K	2.5W	400	160 LPW
TDXL2-1-S-24-W	6500K	5.0W	800	160 LPW



TX2L-TDXL2 RETROFIT KITS

LED Sign Cabinet Lighting

- 200,000 Hrs. L70 lifetime
- 3000K, 4000K, 5000K, or 6500K CCT
- 24VDC input
- 70+ CRI
- Single or double-sided modules
- LED modules mounted on an aluminum extrusion to install in existing fluorescent sockets
- Custom lengths available
- 3"-18" from sign cabinet face
- Power supply and enclosure accessories available

MODEL	CCT	SIDES	MODULES	WATTS	LUMENS	EFFICACY
TX2L-4-24-S-3-48-W	6500K	Single	3 Qty.	7.5W	1,200	160 LPW
TX2L-4-24-S-4-48-W	6500K	Single	4 Qty.	10.0W	1,600	160 LPW
TX2L-4-24-D-3-48-W	6500K	Double	3 Qty.	15.0W	2,400	160 LPW
TX2L-4-24-D-4-48-W	6500K	Double	4 Qty.	20.0W	3,200	160 LPW

POINT XL2 MODULES

LED Channel Letter Lighting

- Available white (3000K-6500K), red (623nm), and green (525nm)
- 12VDC input
- 70+ CRI
- 175° beam angle
- 2"-12" channel letter depths
- Power supply and enclosure accessories available

MODEL	CCT	WATTS	LUMENS	EFFICACY
PXL2-2-12-W	6500K	1.15W/ft.	196 lumens/ft.	170 LPW
PXL2-2-12-R	Red (623nm)	1.1W/ft.	48 lumens/ft.	45 LPW
PXL2-2-12-G	Green (525nm)	1.6W/ft.	140 lumens/ft.	88 LPW
PXL2-2-12-B	Blue (465nm)	1.6W/ft.	35 lumens/ft.	22 LPW



SAVER XL2 MODULES

LED Channel Letter Lighting

- Available in 3000K, 4000K, 5000K, and 6500K CCT
- 12VDC input
- 70+ CRI
- 175° beam angle
- 1"-12" channel letter depths
- Power supply and enclosure accessories available

MODEL	CCT	WATTS	LUMENS	EFFICACY
SXL2-1-12-W	6500K	.72W/ft.	122/ft.	170 LPW



PSB SERIES

Power Supply Units

- For use in signage applications
- 90-305VAC input
- 12-24VDC output
- IP66 rating
- Suitable for damp locations
- Housing designed for high thermal capability
- Complies with UL879, UL8750, UL1310 and CSA 22.2

MODEL	MODEL DESCRIPTION
PSB-1-12-12	12V/12W Power Supply Unit
PSB-1-12-60	12V/60W Power Supply Unit
PSB-1-24-96	24V/96W Power Supply Unit





LIFE SAFETY
LED LIGHTING
SOLUTIONS



EMERGENCY EXIT SIGN

Life Safety LED Lighting

- Large illuminated red letters
- Snap out directional indicators
- 1.2V rechargeable battery: 90 min. of emergency operation
- Automatic two-rate charger will recharge discharged battery in 24 hours
- Easy canopy or wall mounting



MODEL	VOLTAGE
ESX1	120-277VAC



SLIM DUAL LED EXIT SIGN COMBO

Life Safety LED Lighting

- Ultra-long life LED lamp heads
- Large illuminated red letters
- 3.6V rechargeable battery: 90 min. of emergency operation
- Automatic two-rate charger will recharge battery in 24 hours
- Single or dual faced standard
- Easy canopy or wall mounting



MODEL	VOLTAGE	LUMENS
ESEM-PC-UNVL-2-RC	120-277VAC	200



DUAL HEAD EMERGENCY LIGHT

Life Safety LED Lighting

- Ultra-long life LED lamp heads
- Adjustable heads for spacing
- 3.6V rechargeable battery: 90 min. of emergency operation
- Automatic two-rate charger will recharge discharged battery in 24 hours
- Easy canopy or wall mounting



MODEL	VOLTAGE	LUMENS
EM-PC-UNVL-2-RC	120-277VAC	200



SINGLE HEAD REMOTE LAMP

Life Safety LED Lighting

- Ultra-long life LED lamp head
- Remote capability
- Easy canopy or wall mounting
- Suitable for outdoor environments
- Injection-molded thermoplastic ABS housing



MODEL	VOLTAGE	LUMENS
EM-PC-24-1-RC	3.6-24VDC	100



DECORATIVE EMERGENCY UNIT

Life Safety LED Lighting

- Decorative low-profile design
- Suitable for wet locations
- 4.8V rechargeable battery; 90 min. of emergency operation
- Automatic two-rate charger will recharge battery in 24 hours
- Photocell sensor for use as dusk-to-dawn light



MODEL	VOLTAGE	LUMENS
DBEL-ACEM-HL-BR-SDT-CW-PC	120-277VAC	1,286



US LED
Always the Right Choice!

866-972-9191
cx@usled.com
www.usled.com

© US LED™ All Rights Reserved.
For informational purposes only. Not a warranty or specification.
See www.usled.com for specifications and warranty.
060426