

LED LIGHTING FOR STORAGE FACILITIES

New Construction & Retrofit Specification Guide



INSIDE STORAGE UNITS

Location:	Inside Storage Units - Retrofit & New Construction	
Manufacturer:	US LED	
Description:	9" Round LED Mini Panel Ceiling Light with Selectable Wattage and Integrated Occupancy/Photocell Sensor	
Model Number:	SCL2-9-UNVL-10-50-WH	
Lumens:	1,213-1,987	Wattage: 10-18
L70 Lifetime:	>30,000 hrs.	
Warranty:	Ten-Year Warranty	



STORAGE HALLWAYS

Location:	Storage Area Hallways	
Manufacturer:	US LED	
Description:	LED Linear Strip with Selectable Wattage/CCT and Junction Box	
Model Number:	USL1-4-UNV-SCCT JB	
Lumens:	3,619-6,106	Wattage: 25-45
L70 Lifetime:	>60,000 hrs.	
Warranty:	Ten-Year Warranty	
Accessory:	30264 10 ft. Aircraft Cable Kit (Toggle)	
Warranty:	Fixture: Ten-Year Warranty	



STORAGE HALLWAYS (EM)

Location:	Storage Area Hallways	
Manufacturer:	US LED	
Description:	LED Linear Strip with Selectable Wattage/CCT and Battery Back-Up	
Model Number:	USL1-4-UNV-SCCT B	
Lumens:	3,619-6,106	Wattage: 25-45
L70 Lifetime:	>60,000 hrs.	
Warranty:	Fixture: Ten-Year Warranty BBU: Five-Year Warranty	



UTILITY ROOMS

Location:	Utility Rooms	
Manufacturer:	US LED	
Description:	LED Linear Strip With Internal On/Off Motion Sensor	
Model Number:	USL1-4-UNV-SCCT M	
Lumens:	3,619-6,106	Wattage: 25-45
L70 Lifetime:	>60,000 hrs.	
Warranty:	Ten-Year Warranty	



NON-CUSTOMER ACCESSIBLE HALLWAYS WITH FAUX DOORS

Location:	Non-Customer Accessible Hallways with Faux Doors	
Manufacturer:	US LED	
Description:	(1) 4' LED Single Lamp Fixture (Top/Bottom Door)	
Model Number:	Fixture: LS-1-4 LED Tube: ST1-4-UNV-4-27A-50-GL-DE	
Lumens:	4,250	Wattage: 27.9
L70 Lifetime:	200,000 hrs.	
Warranty:	Fixture: Three-Year Warranty LED Tube: Ten-Year Warranty	



CUSTOMER ACCESSIBLE HALLWAYS WITH FAUX DOORS

Location:	Customer Accessible Hallways with Faux Doors	
Manufacturer:	US LED	
Description:	HLS1 High Output LED Linear Strip	
Model Number:	HLS1-1-4-UNVL-70-50	
Lumens:	10,434	Wattage: 68
L70 Lifetime:	167,000 hrs.	
Warranty:	Ten-Year Warranty	



STAIRWELLS

Location:	Egress Stairways	
Manufacturer:	US LED	
Description:	LED Linear Strip with Selectable Wattage/CCT Dimmable Occ. Sensor, Photocell, Battery Back-Up	
Model Number:	USL1-4-UNV-SCCT BMS	
Lumens:	3,619-6,106	Wattage: 25-45
L70 Lifetime:	>60,000 hrs.	
Warranty:	Fixture: Ten-Year Warranty Sensor/BBU: Five-Year Warranty	



OFFICE - DROP CEILINGS

Location:	Office - Drop Ceilings
Manufacturer:	US LED
Description:	L-Grid® ProMax Select 2x2 Flat Panel
Model Number:	FTR4-22-UNVL-26-SCCT
Lumens:	3,770-5,800 Wattage: 26-40
L70 Lifetime:	165,000 hrs.
Warranty:	Ten-Year Warranty
Additional Models Available:	FTR4-14-UNVL-26-SCCT L-Grid ProMax Select 1x4 FTR4-24-UNVL-32-SCCT L-Grid ProMax Select 2x4



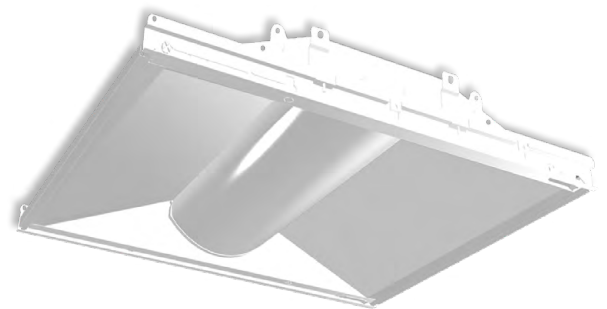
OFFICE - DROP CEILINGS (EM)

Location:	Office - Drop Ceilings
Manufacturer:	US LED
Description:	L-Grid® ProMax Select 2x2 Flat Panel with Battery Back-Up
Model Number:	FTR4-22-UNVL-26-SCCT BBU
Lumens:	3,770-5,800 Wattage: 26-40
L70 Lifetime:	165,000 hrs.
Warranty:	Ten-Year Warranty



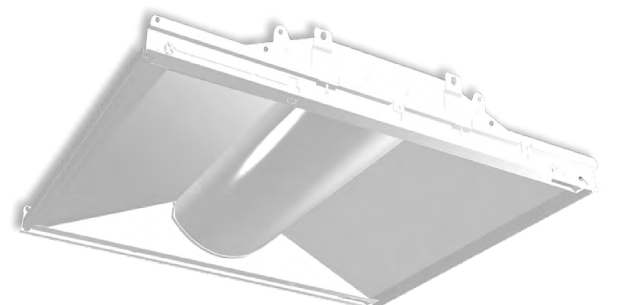
OFFICE - ALTERNATE

Location:	Retail Office - Recessed Mount
Manufacturer:	US LED
Description:	TEG LED 2x2 Architectural Recessed Troffer
Model Number:	TEG1-1-22-UNVL-30-1-50
Lumens:	4,110 Wattage: 31.3
L70 Lifetime:	>161,000 hrs.
Warranty:	Ten-Year Warranty



OFFICE - ALTERNATE (EM)

Location:	Retail Office - Recessed Mount
Manufacturer:	US LED
Description:	TEG LED 2x2 Architectural Recessed Troffer With Integrated Battery Back-Up
Model Number:	TEG1-1-22-UNVL-30-1-50 B
Lumens:	4,110 Wattage: 31.3
L70 Lifetime:	>161,000 hrs.
Warranty:	Fixture: Ten-Year Warranty BBU: Five-Year Warranty



OFFICE ALTERNATE - OPEN CEILINGS

Location:	Retail Office Light - Open Ceiling Only
Manufacturer:	US LED
Description:	LAS1 Architectural Strip with Selectable CCT 4ft 120-277V White Linkable Down Light Only
Model Number:	LAS1-4-30-UNVL-SCCT-WH-L-DO
Lumens:	3,900 Wattage: 30.0
L70 Lifetime:	>50,000 hrs.
Warranty:	Five-Year Warranty
Accessory:	LAS-NC1 8' Suspended Mount Kit (No Power) LAS-PC1 8' Suspended Mount Kit (Power Cable)



INTERIOR VESTIBULE & OUTDOOR OVERHANG

Location:	Interior Vestibule & Outdoor Overhang
Manufacturer:	US LED
Description:	LED Downlight - 6" Round
Model Number:	LTR4-6R-UNV-1-SCCT-WH
Lumens:	750-1,500 Wattage: 9-10
L70 Lifetime:	>60,000
Warranty:	Five-Year Warranty
Accessory:	EM-H25170-LBF Emergency Battery Back-Up



UNDER CANOPY - 4 FT. SECTION

Location:	Under Canopy - 4 ft. Section
Description:	SFAL LED Accent Lighting Kit 4 ft. Extrusion LED Tape Light and End Caps
Model Number:	SFAL-1-50-4-24
Lumens:	460 lumens/ft. CCT: 5000K
L70 Lifetime:	50,000 hrs.
Warranty:	Five-Year Warranty
Accessory:	PSB-1-24-96 24V/96W Power Supply



POWER SUPPLIES

Location:	Under Canopy - Power Supply
Manufacturer:	US LED
Description:	US LED Power Supply 24V/96W 120-277 Primary Input Voltage
Model Number:	PSB-1-24-96
Warranty:	Ten-Year Warranty



**STORAGE FACILITY
ENTRANCE - VESTIBULE**

Location:	Storage Facility Entrance - Vestibule	
Manufacturer:	US LED	
Description:	1x1 Soffit EH w/ Drywall Flange Kit	
Model Number:	GTR2-11EH-50-80-UNV2-S	
Lumens:	2,250	Wattage: 23.5
L70 Lifetime:	200,000 hrs.	
Warranty:	Ten-Year Warranty	
Accessory:	Surface Mount Kit - SSMK1 Recessed Mount Kit - DW-11	



**WALL MOUNT DRIVE AISLE -
STANDARD LUMENS**

Location:	Wall Mount Drive Aisle 40' O.C.	
Manufacturer:	US LED	
Description:	QubePAK®4 LED Wall Pack Bronze Finish	
Model Number:	ULWL1-3-UNVL-50-40-BZ	
Lumens:	6,600	Wattage: 40.0
L70 Lifetime:	200,000 hrs.	
Warranty:	Ten-Year Warranty	
Accessory:	WG Wire Guard	



**WALL MOUNT DRIVE AISLE -
HIGH LUMENS**

Location:	Wall Mount Drive Aisle 40' O.C.	
Manufacturer:	US LED	
Description:	QubePAK®4 LED Wall Pack Bronze Finish	
Model Number:	ULWL1-1-UNVL-50-72-BZ	
Lumens:	11,550	Wattage: 72.0
L70 Lifetime:	200,000 hrs.	
Warranty:	Ten-Year Warranty	
Accessory:	WG Wire Guard	



**WALL MOUNT -
SOLAR LIGHTING**

Location:	Wall Mount - Solar Lighting For Remote Areas	
Manufacturer:	US LED	
Description:	EcoNight® SOL LED Full Cutoff Solar Wall Pack	
Model Number:	ULFCS-1-DCVL-50-9-BZ	
Lumens:	1,500	Wattage: 9W
L70 Lifetime:	>50,000 hrs.	
Warranty:	Fixture Three-Years; Battery Two-Years	



**WALL MOUNT DRIVE AISLE
DARK SKY - STANDARD LUMENS**

Location:	Wall Mount Drive Aisle 40' O.C. (Where Dark Sky Compliance Is Required)	
Manufacturer:	US LED	
Description:	EcoNight®4 LED Wall Pack Bronze Finish	
Model Number:	ULFC1-3-UNVL-50-40-BZ	
Lumens:	6,600	Wattage: 40.0
L70 Lifetime:	200,000 hrs.	
Warranty:	Ten-Year Warranty	



**WALL MOUNT DRIVE AISLE
DARK SKY - HIGH LUMENS**

Location:	Wall Mount Drive Aisle 40' O.C. (Where Dark Sky Compliance Is Required)	
Manufacturer:	US LED	
Description:	EcoNight®4 LED Wall Pack Bronze Finish	
Model Number:	ULFC1-1-UNVL-50-75-BZ	
Lumens:	12,375	Wattage: 75.0
L70 Lifetime:	200,000 hrs.	
Warranty:	Ten-Year Warranty	



**EXTERIOR FAUX STORAGE
AREA DOORS**

Location:	Exterior Faux Storage Doors	
Manufacturer:	US LED	
Description:	Night Guard® LED Flood Light With Selectable CCT, Wattage and Photocell	
Model Number:	NGFL-18-SCCT-UNVL-K-BR	
Lumens:	2,804-4,935	Wattage: 18-30W
L70 Lifetime:	≥146,000 hrs.	
Warranty:	Ten-Year Warranty	
Accessory:	NG-24-BZ 24" Bronze Arm Mount Kit	



ELEVATOR PIT LIGHT

Location:	Elevator Pit Light	
Manufacturer:	US LED	
Description:	VaporStar Vapor Tight Enclosed 4' LED Light	
Model Number:	VTF1-1-4-UNVL-40-2-50	
Lumens:	5,200	Wattage: 40.0
L70 Lifetime:	≥161,000 hrs.	
Warranty:	Five-Year Warranty	



MAIN LOADING AREAS & COVERED PARKING

Location:	Main Loading Areas & Covered Parking	
Manufacturer:	US LED	
Description:	Outdoor Parking Garage Canopy Light - Bronze	
Model Number:	QPXL1-1-75-UNVL-50-70-BZ	
Lumens:	11,440	Wattage: 77
L70 Lifetime:	>200,000 hrs.	
Warranty:	Ten-Year Warranty	



OUTDOOR AREA/SITE

Location:	Exterior Fixture for Pole or Building Mount	
Manufacturer:	US LED	
Description:	LED Area Light with Selectable CCT (5M Lens)	
Model Number:	RCAL1-30-SCCT-UNVL-1-5-10SP-Z5 300	
Lumens:	45,056	Wattage: 299.8
L70 Lifetime:	≥167,000 hrs.	
Warranty:	Ten-Year Warranty	



Accessories:
 (Specify Mount)
AM-B - Slip Fitter Mount (Bronze)
DM-B - Adjustable Mount Square/Round Pole (Bronze)
YM-B - Trunnion Mount (Bronze)
ADM-B - 2 3/8" Round Tenon Mount (Bronze)

OUTDOOR FLOOD

Location:	Exterior Fixture for Pole or Building Mount	
Manufacturer:	US LED	
Description:	LED Area Light with Selectable CCT (5M Lens)	
Model Number:	RCAL1-15-SCCT-UNVL-1-5-10SP-Z5 120	
Lumens:	17,963	Wattage: 119.6
L70 Lifetime:	≥167,000 hrs.	
Warranty:	Ten-Year Warranty	



Accessories:
 (Specify Mount)
AM-B - Slip Fitter Mount (Bronze)
DM-B - Adjustable Mount Square/Round Pole (Bronze)
YM-B - Trunnion Mount (Bronze)
ADM-B - 2 3/8" Round Tenon Mount (Bronze)

EXTERIOR POLES

Location:	Exterior Parking Lot Poles	
Description:	20' Square Straight Steel Pole With Anchor Bolts Bronze Finish 4-Bolt Base Plate Square Base ABS Plastic Plate Cover	
Model Number:	SSS20D4-4-BZ	



STANDARD EXIT SIGN

Description: 2-Sided Exit Sign with Battery Back-Up

Model Number: [ESX1](#)

Voltage: 120-277V **Rating:** Damp Location

Warranty: Five-Year Warranty



EXIT SIGN/LIGHT COMBO

Description: LED Exit Sign with Two LED Emergency Lights

Model Number: [ESEM-PC-UNVL-2-RC](#)

Voltage: 120-277V **Rating:** Damp Location

Warranty: Five-Year Warranty



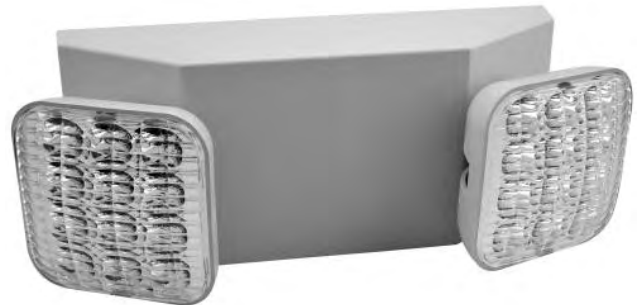
EMERGENCY LIGHT

Description: Dual Head LED Emergency Light

Model Number: [EM-PC-UNVL-2-RC](#)

Voltage: 120-277V **Rating:** Damp Location

Warranty: Five-Year Warranty



DECORATIVE EMERGENCY LIGHT

Description: Decorative Emergency Light

Model Number: [DBEL-ACEM-HL-BR-SDT-CW-PC](#)

Voltage: 120-277V **Rating:** Damp Location

Warranty: Five-Year Warranty



HIGH CEILINGS

Location:	High Ceiling Applications	
Manufacturer:	US LED	
Description:	ExsaBay® Xtreme Compact LED High Bay	
Model Number:	EBXC1-1-UNVL-90-SCCT-188-N-N	
Lumens:	31,020	Wattage: 188.0
L70 Lifetime:	>167,000 hrs.	
Warranty:	Ten-Year Warranty	



LED LAMPS - STANDARD LUMEN OUTPUT

Description:	4' T8 LED Lamp - Type A+B Double-Ended	
Manufacturer:	US LED	
Model Number:	ST1-14-UNV-4-10A-50-GL-DE-T8	
Lumens:	1,750	Wattage: 10.5
L70 Lifetime:	>200,000 hrs.	
Warranty:	Ten-Year Warranty	



LED LAMPS - HIGH LUMEN OUTPUT

Description:	4' T8 LED Lamp - Type B Double-Ended	
Manufacturer:	US LED	
Model Number:	ST1-4-UNV-4-27A-50-GL-DE	
Lumens:	4,250	Wattage: 27.9
L70 Lifetime:	>200,000 hrs.	
Warranty:	Ten-Year Warranty	



EMERGENCY LED LAMP

Description:	4' T10 Emergency LED Lamp With Integrated Battery Back-Up	
Manufacturer:	US LED	
Model Number:	EMT1-2-UNV-4-15A-50-DE-T10	
Lumens:	2,800 (360 EM)	Wattage: 15
L70 Lifetime:	>50,000 hrs.	
Warranty:	Five-Year Warranty	



BATTERY BACK-UP

Description:	ACE LEDs Emergency LED Driver	
Model Number:	ACE-G10B-180CP	
Voltage:	120-277VAC	Operation Time: 90 minutes
Manufacturer Warranty:	Five-Year Warranty	



TIME CLOCK

Location:	Illuminated Signage	
Manufacturer:	Intermatic Inc.	
Description:	Astro-Timer	
Model Number:	ET8015C	
Voltage:	120-277V	Backup: 3-Year Battery
Warranty:	One-Year Warranty	



WALL SENSOR SWITCH

Location:	Office	
Manufacturer:	Leviton	
Description:	Ultrasonic/Infrared, Multi-Technology Wall Switch Sensor, No Neutral, 2400 sq. ft. Major & 400 sq. ft. Minor Motion Coverage, White	
Model Number:	OSSMT-GDW	
Voltage:	120-277V	Sensor Technology: Passive Infrared
Warranty:	Five-Year Warranty	



OCCUPANCY SENSOR (Line Voltage)

Location:	Hallway	
Manufacturer:	Acuity Brands / SensorSwitch	
Description:	Ceiling Mount Occupancy Sensor 360° Motion	
Model Number:	CMR-10	
Voltage:	120-277V	Sensor Technology: Passive Infrared (PIR)
Warranty:	Five-Year Warranty	



OCCUPANCY SENSOR (Low Voltage)

Location:	Hallway	
Manufacturer:	Leviton	
Description:	Ceiling Mount Occupancy Sensor 360° Motion	
Model Number:	OSC04-10W	
Voltage:	24 VDC	Sensor Technology: Passive Infrared
Accessory:	Leviton Power Supply - OSP20-ND0	
Warranty:	Five-Year Warranty	



WE DO THE RIGHT THINGS, THE RIGHT WAY, AND ON TIME.

PLEASE CONTACT US LED WITH ANY QUESTIONS:

EMAIL: CUSTOMERSERVICE@USLED.COM

PHONE: (866) 972-9191

All US LED Customer Service team members will be notified of your request, and the first available team member will take the call or reply to your email. If you have any suggestions on improving our service, please email us your requests or suggestions.



US LED[™]
Always the Right Choice!

WWW.USLED.COM | 866-972-9191 | CUSTOMERSERVICE@USLED.COM

© US LED[™] All Rights Reserved. For informational purposes only.
See USLED.com for product specifications, warranties, and terms & conditions.